

INSTITUTIONAL FACILTIES

I Alternate sources of energy

A. Solar panels at roof top of different blocks



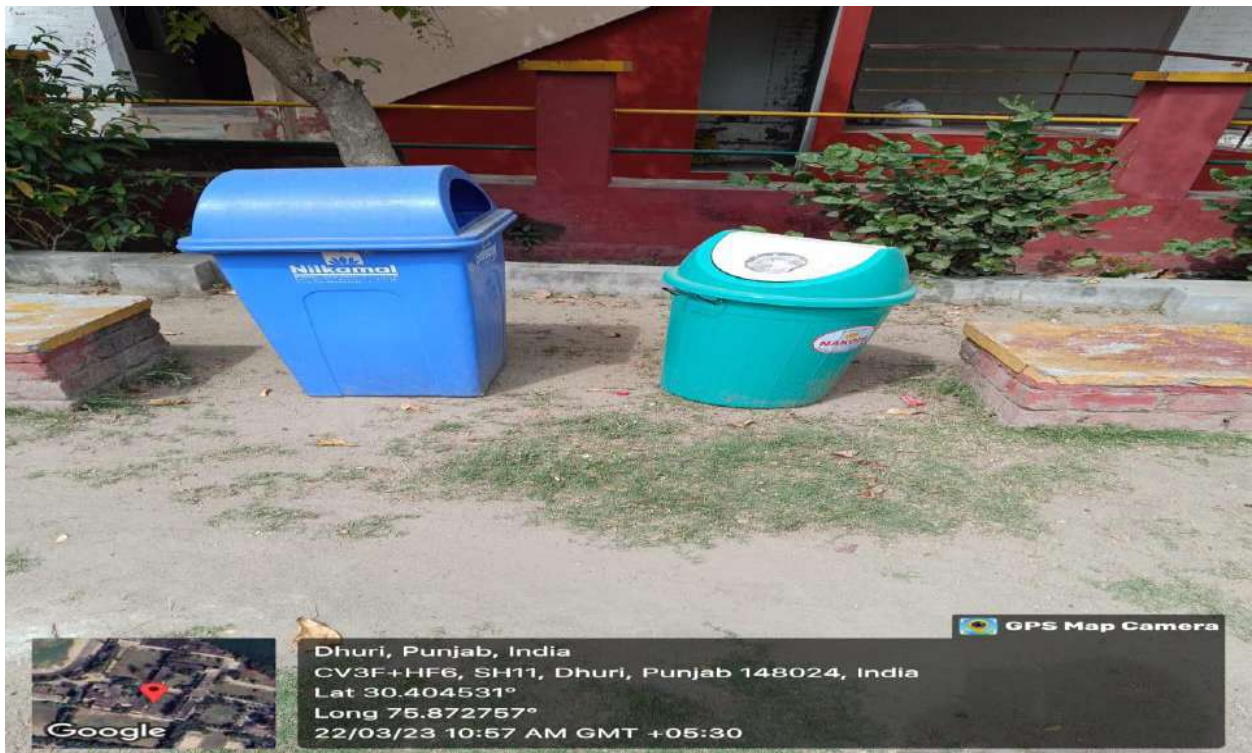


B. Generator

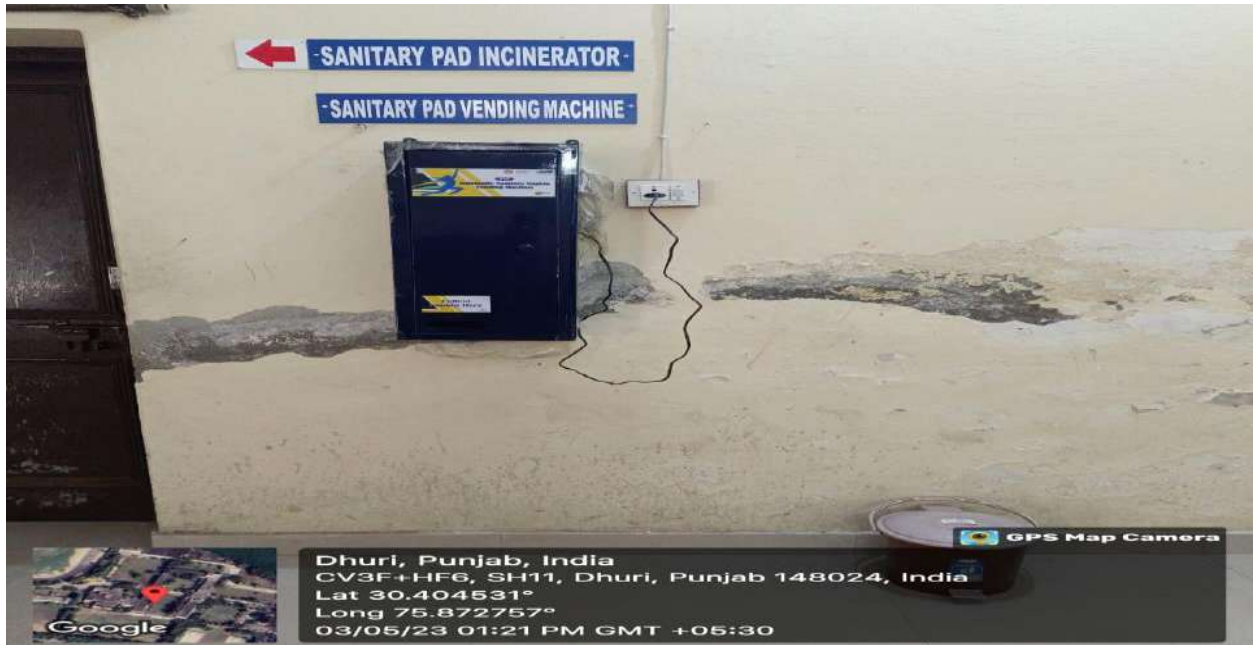


II. Management of various types of waste

A. Solid waste in different colored bins



B. Incinerator and sanitary pad vending machine installed in common room



C. Collection of leaf litter



D. Dumping of leaf litter for compost



E. Vermicompost



III. Water Conservation

A. Drinking water zone at different locations





Dhuri, Punjab, India
CV3F+HF6, SH11, Dhuri, Punjab 148024, India
Lat 30.404531°
Long 75.872757°
22/03/23 10:34 AM GMT +05:30

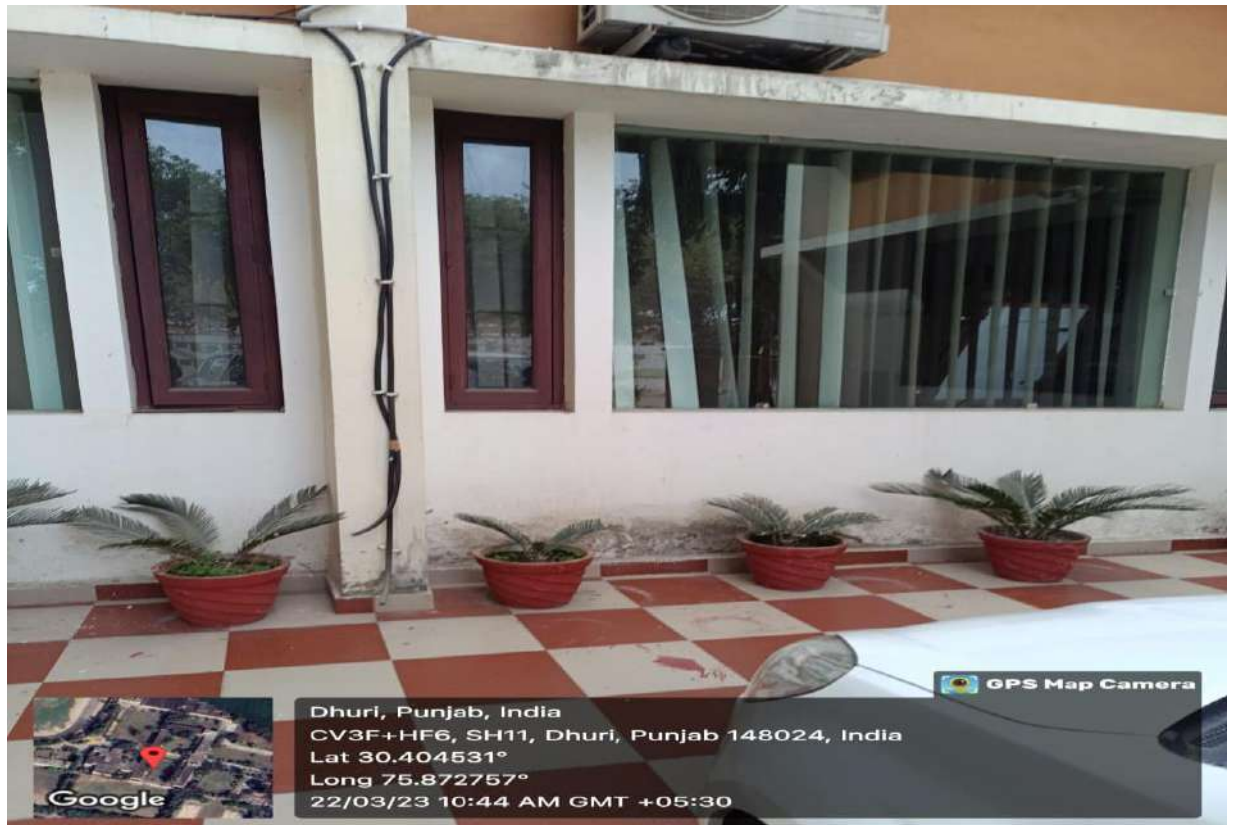
GPS Map Camera



Dhuri, Punjab, India
CV3F+HF6, SH11, Dhuri, Punjab 148024, India
Lat 30.404253°
Long 75.872519°
17/02/23 10:43 AM GMT +05:30

GPS Map Camera

B. Management of waste water from AC



C. Proper drainage pipes within the campus



D. Rain water harvesting unit behind principal room



E. Submersible pump

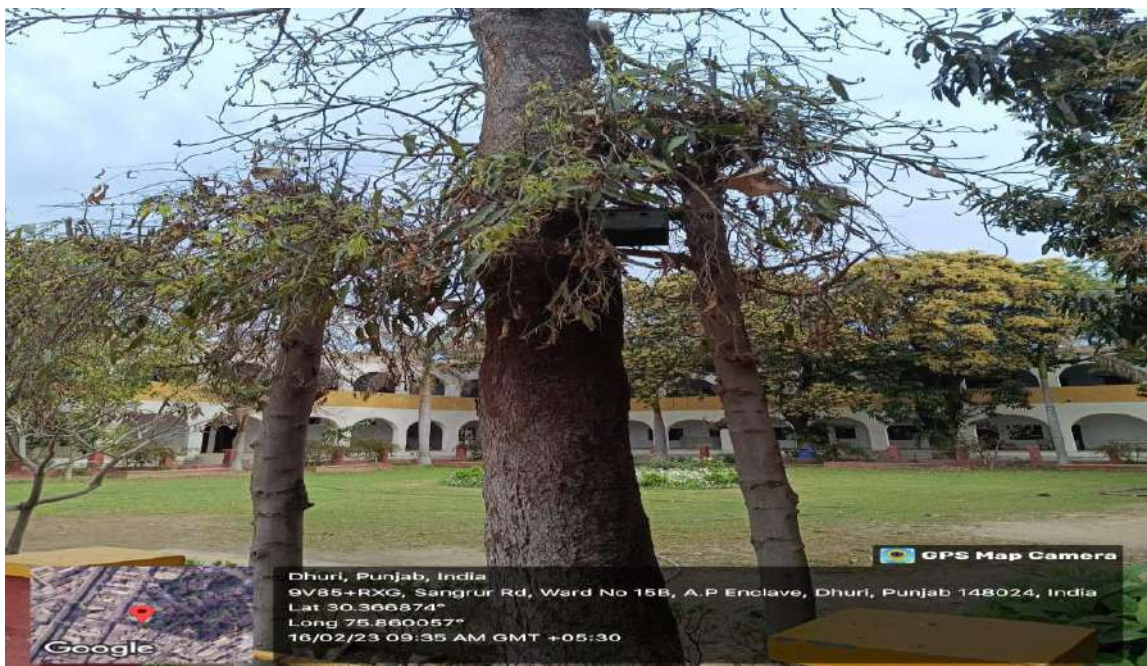


F. Sprinkling water



IV campus Green initiatives

A Lash green lawn





B Ornamental garden



C Birds nest installed at various locations

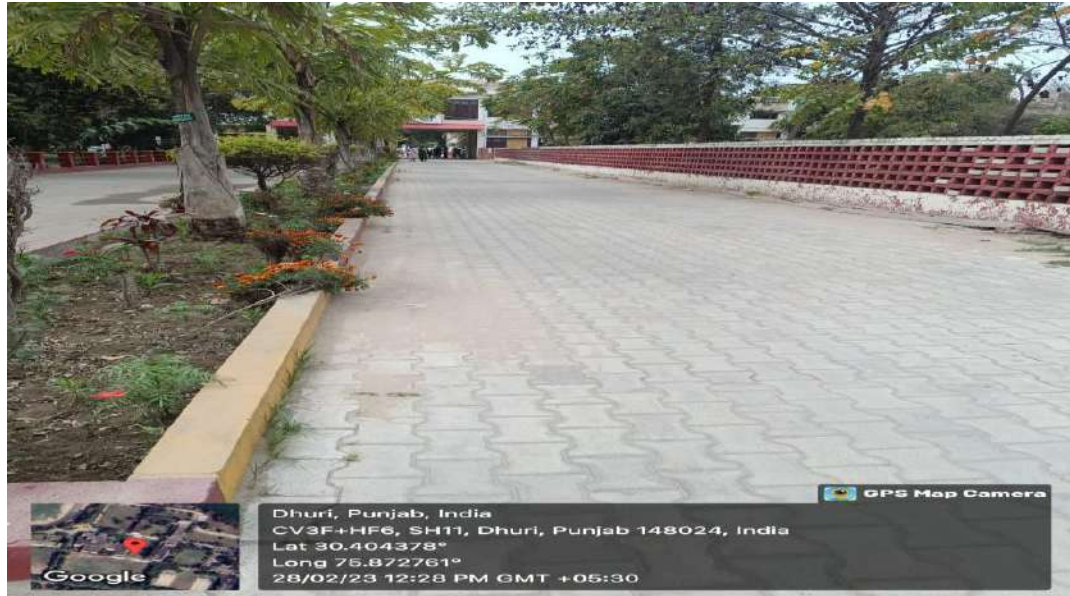




D View of pedestrian path







E Management of waste water from RO



V Disabled friendly environment

A Ramps for PWD students

1 In commerce block



2 In Computer block



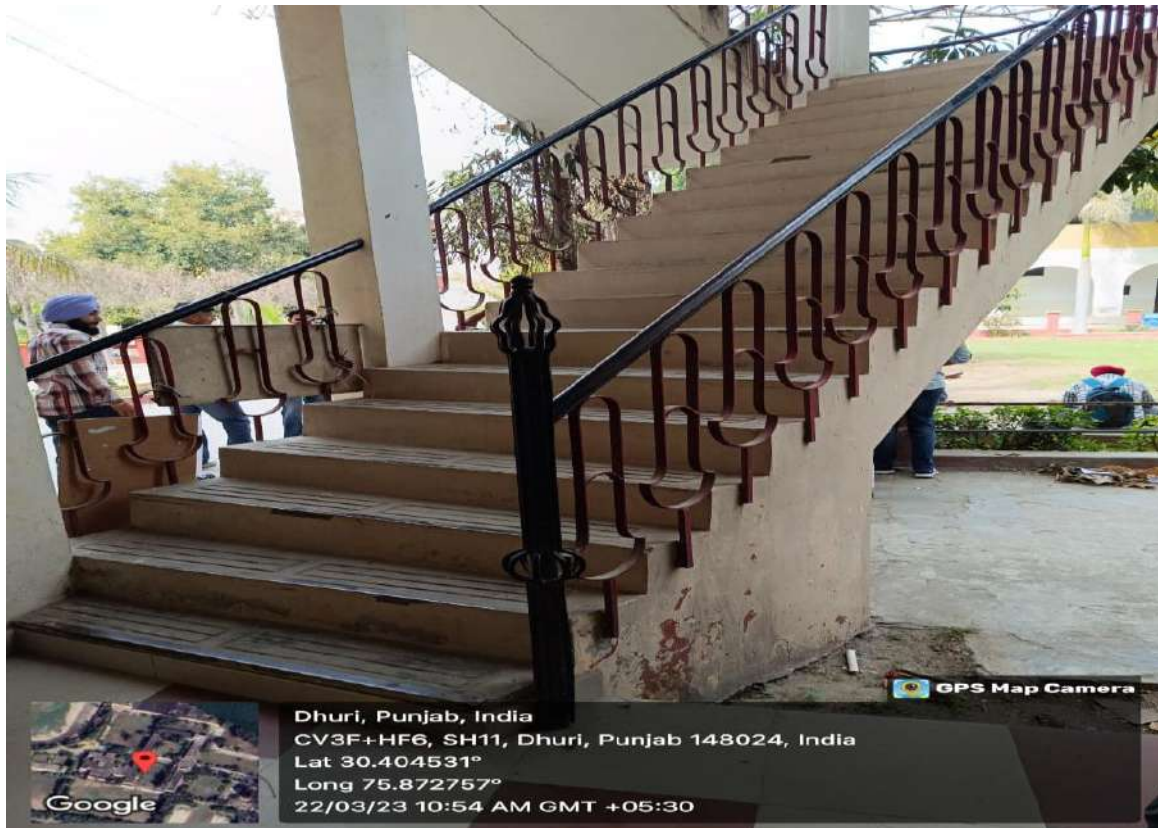
3 In arts block



4 In Vocational block



B Rallings for Divyangjans at different locations in campus







C Availability of wheel chair for PWD students and MI room





D Washroom for disabled students





405

GPS Map Camera



Dhuri, Punjab, India
CV3F+HF6, SH11, Dhuri, Punjab 148024, India
Lat 30.404378°
Long 75.872761°
28/02/23 12:26 PM GMT +05:30